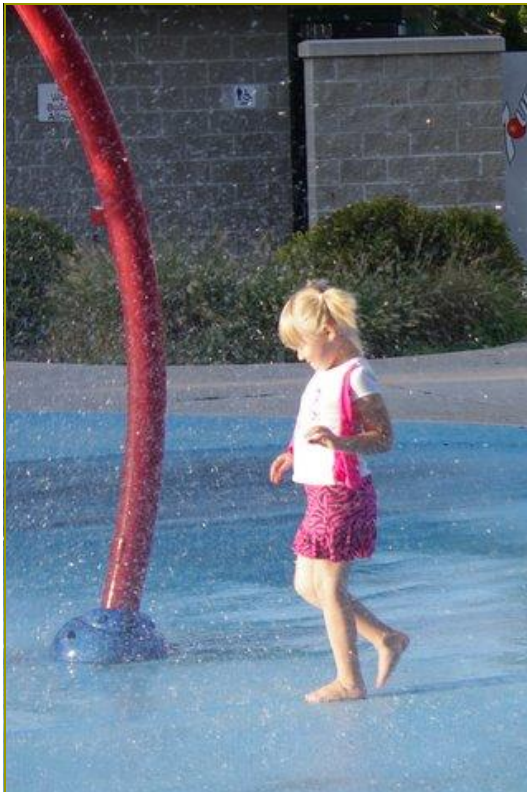




Godfrey Park



Come Enjoy The Fun!

GODFREY PARK
SOUTH JACKSONVILLE, ILLINOIS
DWG. #065247

AGES 5-12 UNIT

POWER ESCAPE

IPEMA CERTIFIED ASTM F1487

WildesLIDE

TOT UNIT VIEW

REVERSE TOT UNIT VIEW

MegaRock

PLAN VIEW

PRIMETIME SWING FRAME 3-1/2" OD

REVERSE VIEW

RECREATION CONCEPTS

Phone: 630/554-1800 Fax: 630/554-3750 Toll Free: 800/942-1062 Email: recon@ameritech.net Website: www.recreationconcept.com

PlayCore

Game GI Time



2011 Parks Report



We opened our Park the weekend of May 26, 2011.

This year we started out with normal maintenance & clean up. We also did some re-mulching. This is something we are going to start doing every year.

Due to the first part of the season being very rainy, we shut down the water park when the City's water plant was down.

The park water usage was down in 2011. We used 6,037,300 gallons compared to 8,911,910 gallons used in 2010.

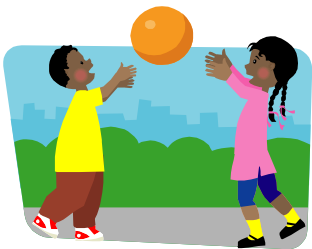
Average daily gallon usage 2009:	69,017 gallons
Average daily gallon usage 2010:	81,760 gallons
Average daily gallon usage 2011:	81,760 gallons



John Green
Superintendent
Parks Department



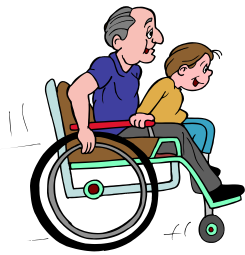
Godfrey Park





Dewey Park







Godfrey Park Splash Pad Fun!

